

Aid Station 1



Aid Station 1 (mile 1) Glacial Drumlin Trail and Mac Arthur Road.

42.998164266943405, -88.26320833572453

Set water station at DNR pay station on north side of the trail.

Directions:

Sentry drive south to Sunset Drive

West on Sunset to St. Paul

Right on St. Paul (north) to Mac Arthur

Left on McArthur



Aid Station 2



Aid Station 2 (mile 2.5) Glacial Drumlin Trail and Les Paul Highway.

42.99312713541018, -88.29048570886275

Aid station goes on west side of Les Paul Highway on path

Directions:

Sentry drive south to Sunset Drive

West on Sunset to Merrill Hills Road

North on Merrill Hills.



Aid Station 3



Aid Station 3 (mile 4.4) Glacial Drumlin Trail and Hwy DT/Waukesha Drive.

42.99742925272686, -88.32379840064995

Place aid station on west side of road

Directions:

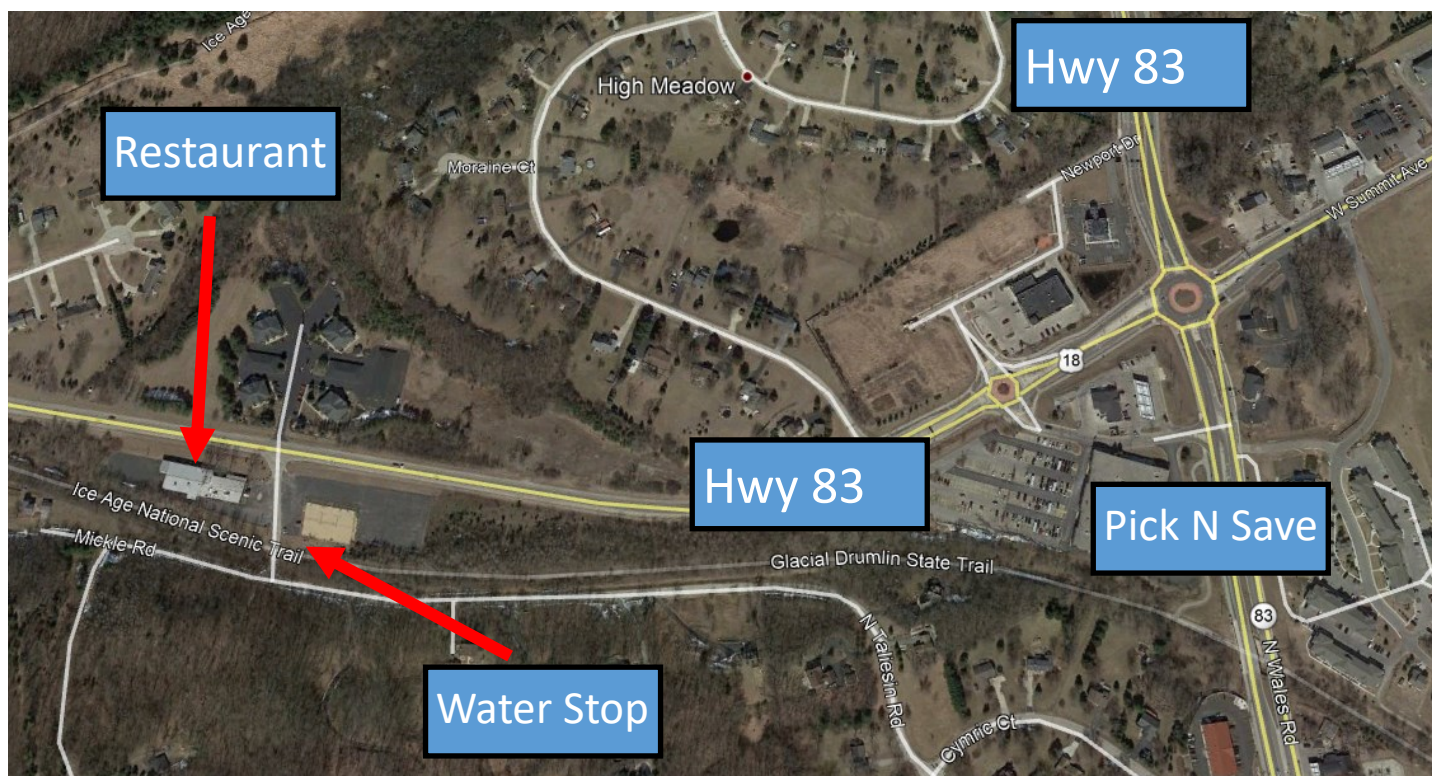
Sentry drive south to Sunset Drive

Right (west) on Sunset to Waukesha DT/Waukesha Drive

Right on Hwy DT/Waukesha Drive to trail



Aid Station 4



Aid Station 4 - Glacial Drumlin Trail and Hwy 18 restaurant

43.01082242289384, -88.39375730143324

Set water station at by sand volleyball courts

South on Sentry to Sunset

West on Sunset to Hwy 83

North on Hwy 83

West on Hwy 18 to Mickle rd.



Aid Station 5



Aid Station 5—Trail & Waterville Road

43.0157624332986, -88.44257505159192

The aid station will be 0.28 miles east of Waterville Road

Directions:

South on Sentry to Sunset

West on Sunset to Hwy 83

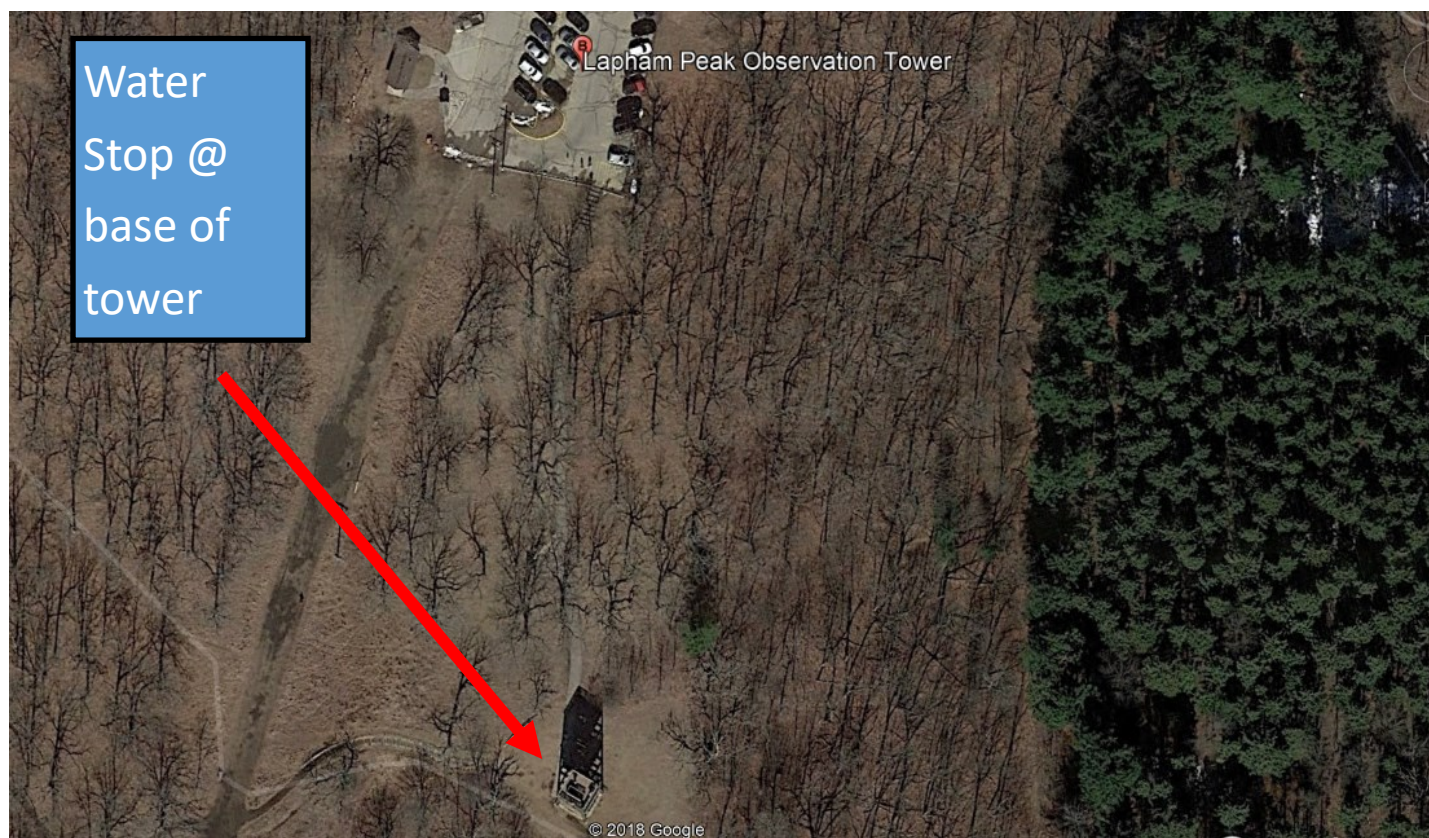
North on Hwy 83

West on Hwy 18 to Waterville

South on Waterville to the trail



Aid Station 6



Aid Station 6—Base of Lapham Peak Tower

43.0157624332986, -88.44257505159192

Directions:

South on Sentry to Sunset

West on Sunset to Hwy 83

North on Hwy 83

West on Hwy 18 to Kettle Moraine Scenic Drive

North on Kettle Moraine Scenic Drive to Lapham Peak

There is a fee to enter the park. We will reimburse you if you do not have a sticker.

